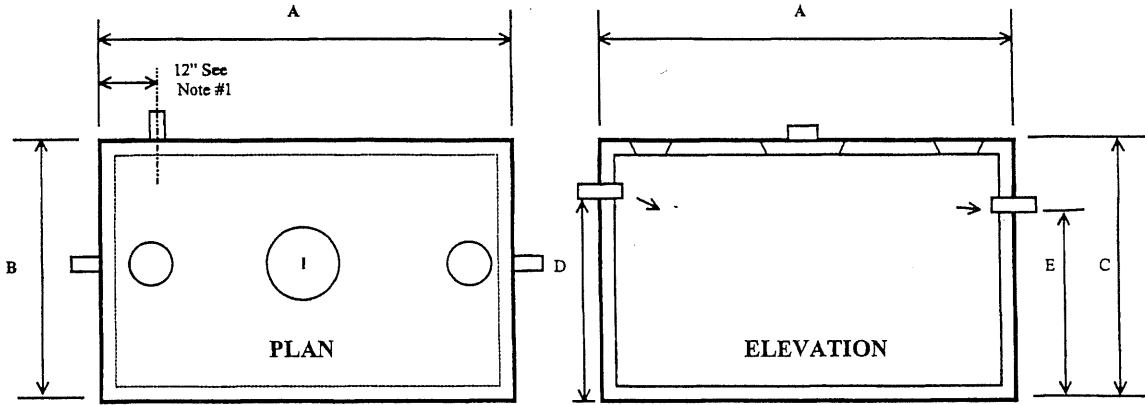


Septic Systems Data Sheet

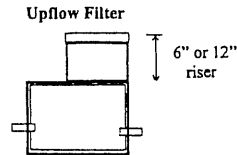
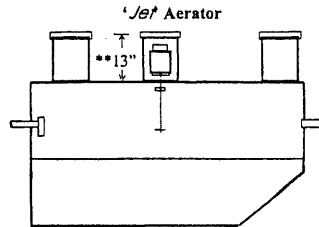


* Tank Size *	A	B	C	D	E	Excavation Size*
500 Gallon Septic	77"	51"	70"	54"	52"	8'x 5'
1000 Gallon Septic	99"	61"	66"	54"	52"	9'x 6'
1500 Gallon Septic	122"	75"	68"	55"	53"	12'x 7'
2000 Gallon Septic	152"	80"	68"	54"	52"	14'x 8'
3500 Gallon Septic	154"	82"	98"	84"	82"	14'x 8'
5000 Gallon Septic	154"	82"	128"	114"	112"	14'x 8'
Jet Aerator	120"	60"	69" **	57"	54"	11' x 6'
Up Flow Filter	51"	57"	45" ***	20"	18"	5'x 6'

** Add 13" for Motor Ring Riser & Lid

*** Add 6" or 12" Riser & Lid

*Length x Width



1. Side inlet 'Knock-Outs' available with the same 'D' dimension.
2. 'A' & 'B' Dimensions actual - excavate larger for setting and backfill (see chart).
3. 1500 thru 3500 gal. septic tanks available in single or double compartment configurations.
4. Maximum earth cover on all tanks should not exceed 36".
5. Do not fill tank above joint level prior to backfill and compaction.
6. Optional - Precast Concrete Clean-Out Risers and Lids.
7. Optional - Distribution, Inspection, & Switch Boxes with Lids.
8. Optional - Upflow Filter with or without Chlorinator.