

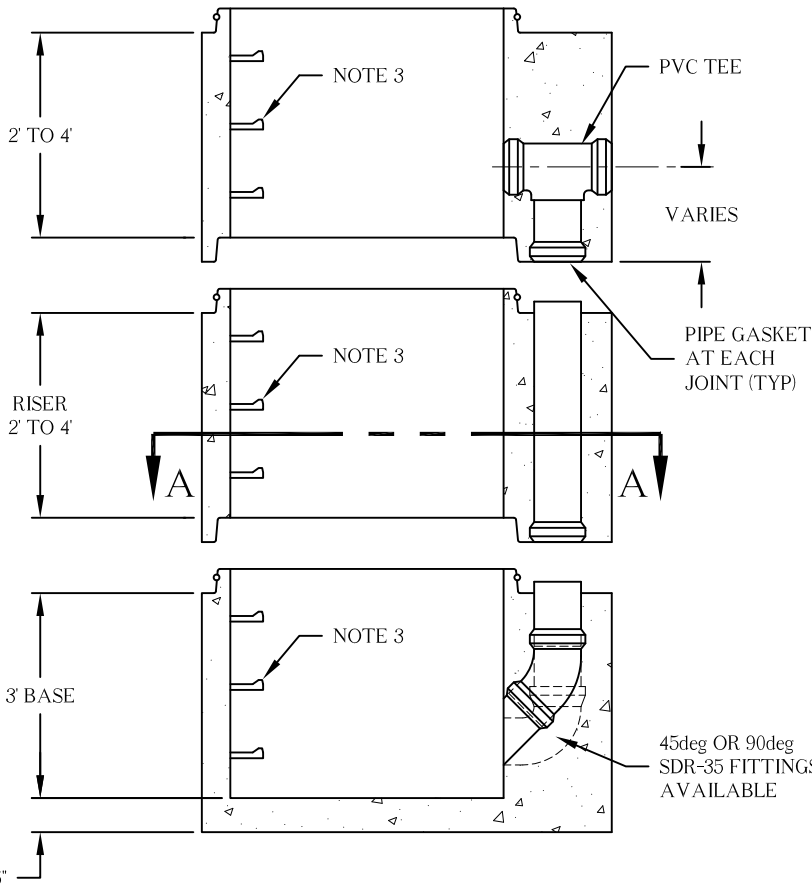
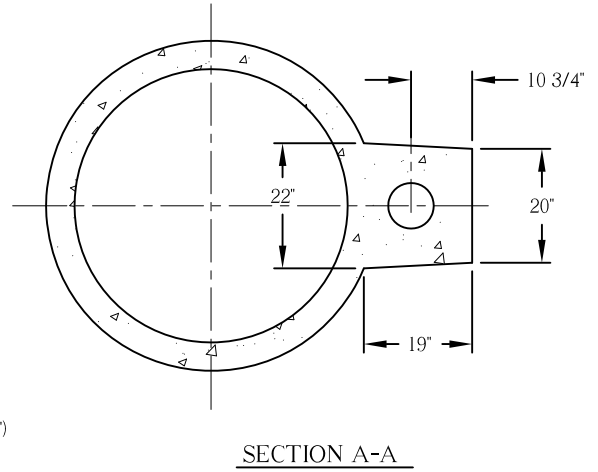
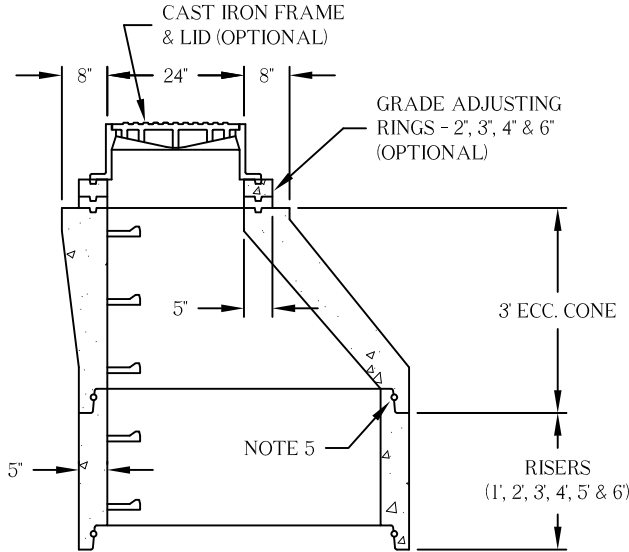


7415 Diley Road
 Canal Winchester, OH 43110

Phone (614) 837-8444
 Toll Free (800) 438-2880
 Fax (614) 837-1198

OUTSIDE DROP MANHOLE COMPONENTS

On Target for Quality Precast Concrete Products and Waste Water Treatment Systems



SECTION VIEW

NOTES:

1. Concrete 4,500 P.S.I. at 28 days minimum.
2. Conforms to ASTM C-478.
3. Steps are M.A. Industries polypropylene (or equal), on 12" centers.
4. Precast flow channels are available.
5. O-ring joints meet ASTM C-443.
6. Manhole design conforms to City of Columbus std. construction drawings AA-S110 & ODOT MH-3.
7. Oversized holes for pipe on storm or gaskets for sanitary.