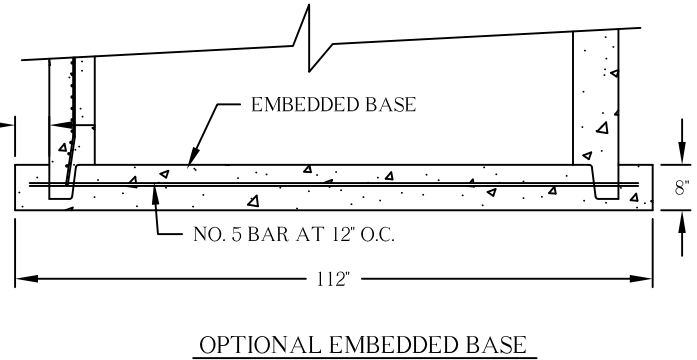
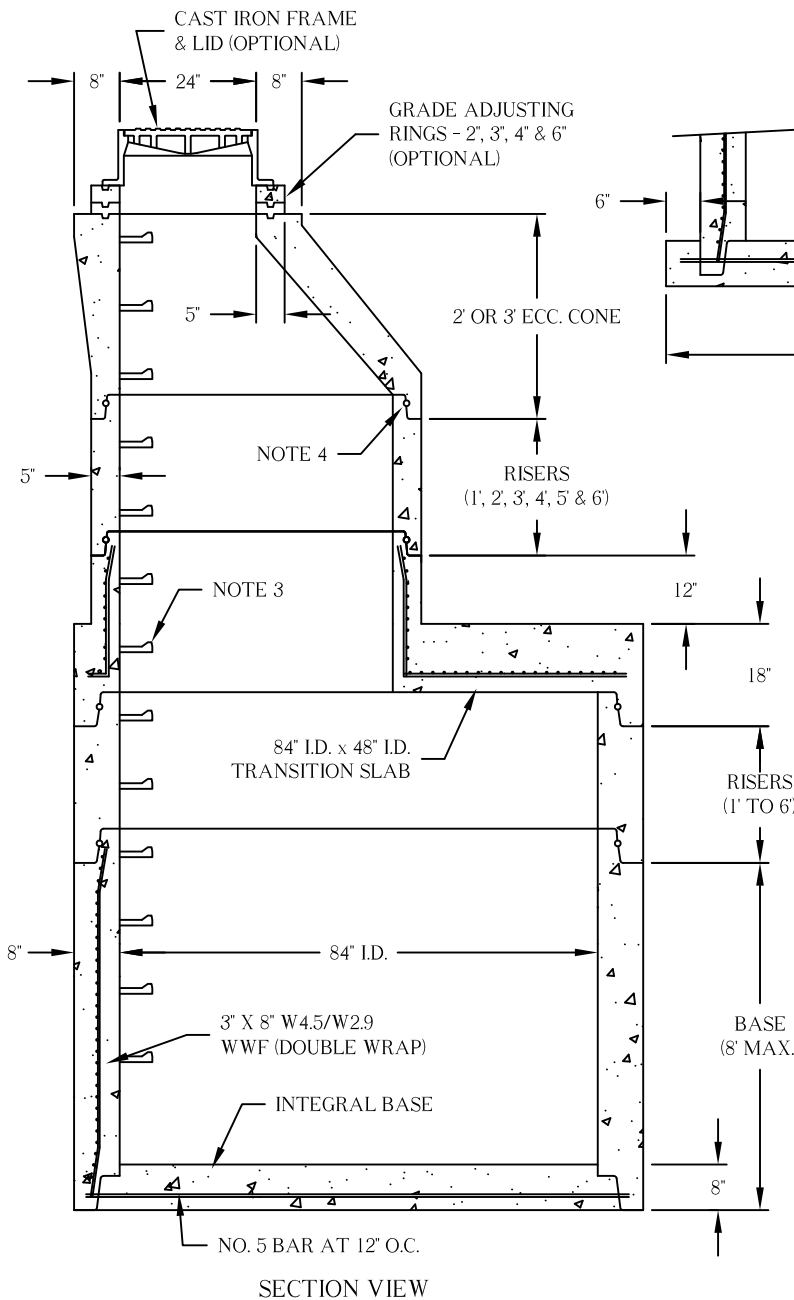
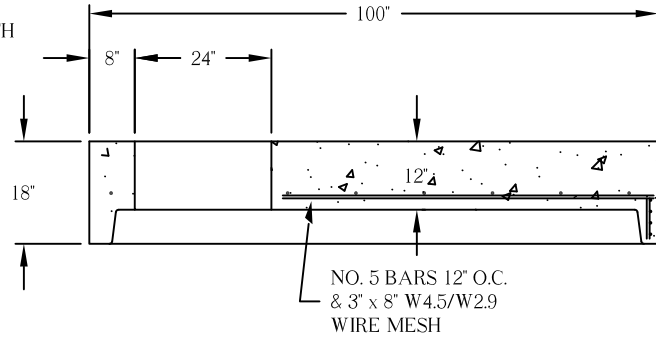
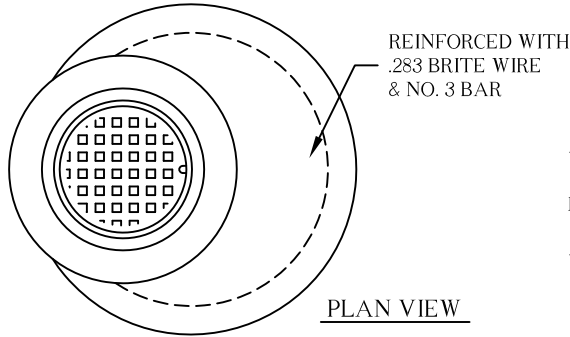


84" I.D. MANHOLE COMPONENTS



NOTES:

1. Concrete 4,500 P.S.I. at 28 days minimum.
2. Conforms to ASTM C-478.
3. Steps are M.A. Industries polypropylene, on 12" centers.
4. O-ring joints meets ASTM C-443.
5. Manhole design conforms to City of Columbus std. construction drawings AA-S101, 106, 107 & ODOT MH-3.
6. Oversized holes for pipe on storm or gaskets for sanitary.