

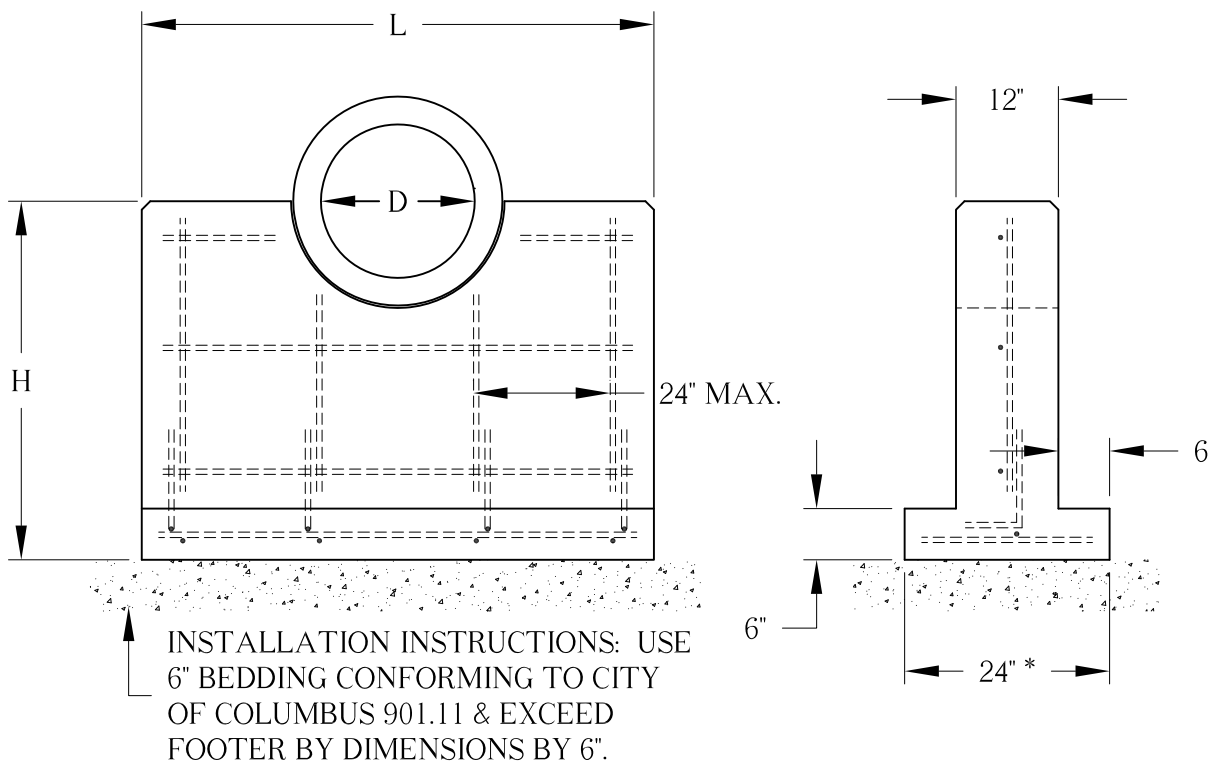


7415 Diley Road  
Canal Winchester, OH 43110

Phone (614) 837-8444  
Toll Free (800) 438-2880  
Fax (614) 837-1198

## PIPE CULVERT ENDWALL

On Target for Quality Precast Concrete Products and Waste Water Treatment Systems



D	L	H
8" & 10"	24"	36"
12" & 15"	42"	36"
18"	60"	42"
21"	72"	42"
24" & 27"	84"	42"
30" & 36"	84"	42"

OTHER SIZES AVAILABLE  
UPON REQUEST

### NOTES:

1. Concrete 4,000 P.S.I. at 28 days minimum.
2. Reinforcement is 5/8" round.
3. Dimensions are for round pipe only. Sizes can be calculated for elliptical or arched pipe on request.
4. Conforms to City of Columbus standard drawing AA-S169 & ODOT HW-4B.

\*Footers for 27" pipe and larger are 36" wide.