

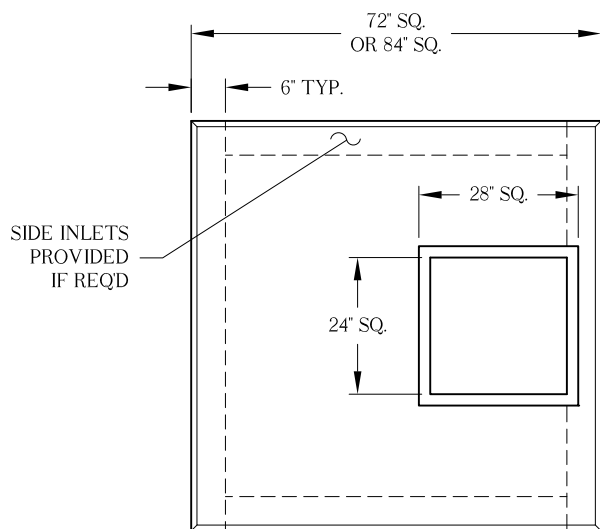


7415 Diley Road
Canal Winchester, OH 43110

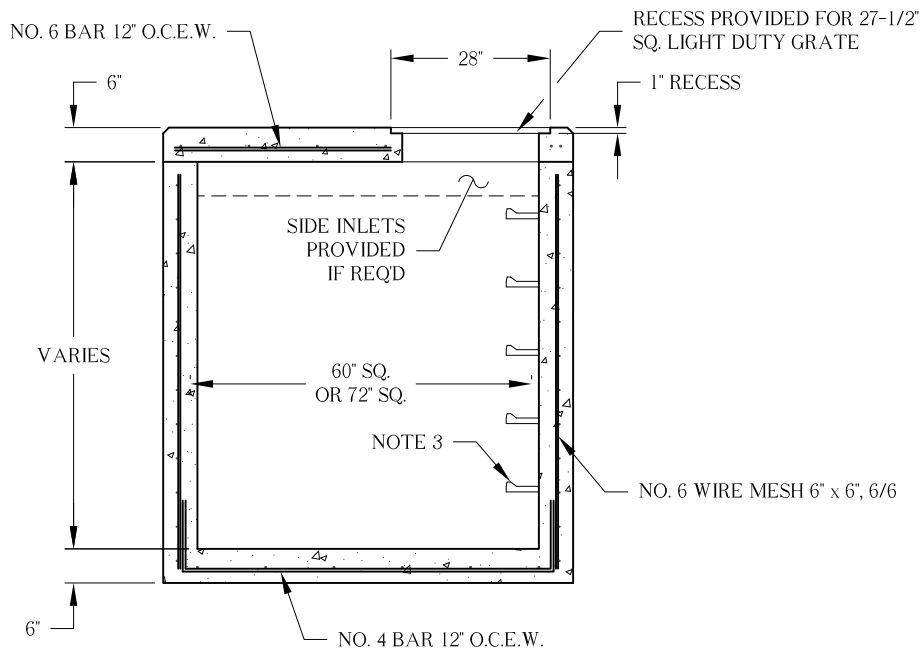
Phone (614) 837-8444
Toll Free (800) 438-2880
Fax (614) 837-1198

5' x 5' CATCH BASIN 6' x 6' CATCH BASIN

On Target for Quality Precast Concrete Products and Waste Water Treatment Systems



TOP VIEW



SECTION VIEW

NOTES:

1. Concrete 4,000 P.S.I. at 28 days minimum.
2. Cast iron is optional.
3. Steps are M.A. Industries polypropolene, on 12" centers.
4. Holes for pipe are 2" larger than pipe O.D.
5. Heavy duty angle frame (cast-in) available for traffic areas.
6. Design conforms to O.D.O.T. standard construction drawings CB 2-5 & 2-6.
7. Tops are also available in 76" & 88" square for field built structures.